

All the seats are taken in **WSEI's** FJO Courses.



The Lisbon School of Functional Jaw Orthopedics starts 2022 with **two complete editions of the Functional Jaw Orthopedics course** for Dentists/Orthodontists/Pediatric Dentists.

Follow Us



Subscriptions



Lisbon School

Dentists training in Functional Jaw Orthopedics



Lisbon Clinic

Specialized teams in Functional Jaw Orthopedics



Lisbon Research

Scientific research in the area of Craniofacial Growth



Functional Jaw Orthopedics – National Course

Due to the high number of candidates, the **WSEI started two editions** of the Functional Jaw Orthopedics course in 2022.

We thank all the trainees who entrust us with their training and we will always be ready to welcome you.

We will share our **clinical experiences**, always based on the friendship and companionship that characterize us.

Functional Jaw Orthopedics course - B-learning

In addition to the classroom modality of the FJO course, the WSEI has a **B-Learning training program** (in portuguese and english), prepared with the highest quality standards. The entire course is supported by videos, worksheets, forum activities, clinical cases and synchronous sessions with a tutor and the possibility to watch the classrooms modules, via zoom, so that all pedagogical objectives are met and we make sure that you will be able to apply these functional orthopedic techniques.



Advanced course in Functional Jaw Orthopedics – National Course

The Lisbon School has carefully prepared another online training dedicated to everyone who already knows the basics and has clinical practice of Functional Jaw Orthopedics.

We will share our clinical experiences, focused on objectives that aim to optimize treatments with functional orthopedic appliances.

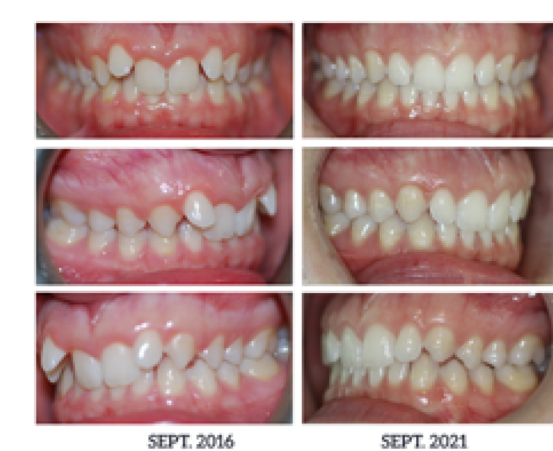
Mark on your calendar and guarantee your spot! May 12 and 13 and November 17 and 18. **"Monotony is not a characteristic of science"** (Wilma Simões).

Our treatments at the **Lisbon Clinic**

WSEI Lisbon School of Functional Jaw Orthopedics



14 YEARS AND 1 MONTHS OLD, FEMALE PATIENT



11 - INTRA-ORAL PHOTOGRAPHS



12 - PROTRUSION PHOTOGRAPHS



13 - LATERALITY PHOTOGRAPHS



14- EXTRA-ORAL PHOTOGRAPHS



15- TELERADIOGRAPH

DIAGNOSTIC

A 14.1-year-old female patient with distocclusion, class 2 with overbite. She has high functional masticatory angles and a leptognathic skeletal pattern.

TREATMENT

She was treated for a period of 3 years with a sequence of functional orthopedic appliances: PIPS, SN20 and SN3.

CLINICAL RESULTS

Distocclusion and severe overbite were treated. A correct dental alignment was obtained. The Planas' functional masticatory angles decreased, which promoted a better masticatory efficiency. 2 years of follow-up without retainers.

Follow Us



About Clinic

Lisbon Research Center

The Lisbon Research Center in Functional Jaw Orthopedics, shows you in this Newsletter the interview of **Dr Carina Esperancinha** to Saúde Oral Magazine with the theme " **Facial harmonisation in childhood, what is it?**"

[View full article](#)

