

WSEI Invites you to the Workshop of "Oral Sleep Medicine"



The WSEI together with the Portuguese Association of Chronobiology and Sleep Medicine is promoting a Workshop at the Faculty of Medicine of Lisbon on the morning of March 13th. The prevention and treatment of sleep breathing problems through functional orthopedic appliances and Myofunctional Therapy is one of the focuses of this workshop which is a part of the 3rd Congress of the Portuguese Association of Chronobiology and Sleep Medicine.

Discount for WSEI trainees until February 27th!! Put WSEI trainee in your application.

Follow Us 

Subscriptions



Lisbon School

Dentists training in
Functional Jaw Orthopedics



Lisbon Clinic

Specialized teams in
Functional Jaw Orthopedics



Lisbon Research

Scientific research in the
area of Craniofacial Growth

The **Lisbon School** has a new moodle platform to ensure excellence in meeting the educational objectives of our courses.



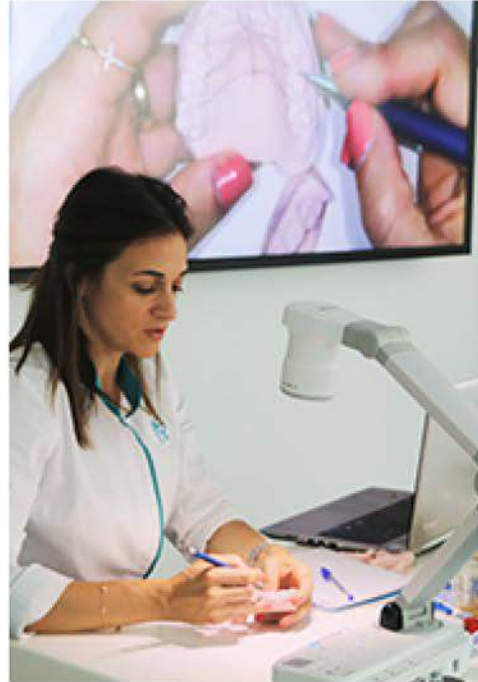
Follow Us 

Visit our Website

FJO Consulting and Clinical Case Discussion Course

The Lisbon School will start the FJO Consulting and Clinical Case Discussion Course, in order to share our clinical experiences and to help you optimize your FJO consultation. The course will be of one day every two months where you can plan your cases and ask questions about the ongoing FJO treatments. You will choose the dates that suit you and how many times you would need to come.

The first edition is on the 17th of April.

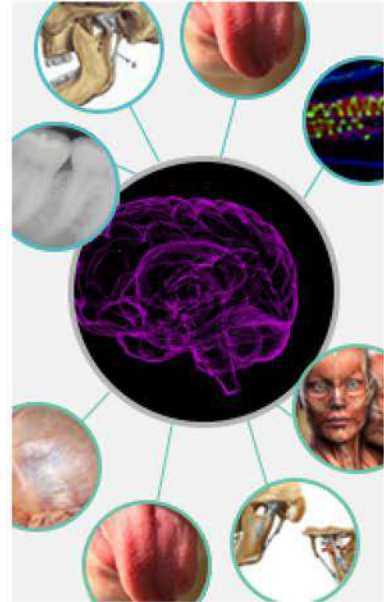


Occlusion for Orthodontics, FJO and Oral Rehabilitation Course

The first edition of the Occlusion for Orthodontics, Functional Jaw Orthopedics and Oral Rehabilitation Course has started. LSFJO welcomes the trainees and Professor Francisco Macedo. At the end of this complete course, trainees will be able to interpret Occlusion in its functional perspective, mainly by evaluating clinical cases in which it may be the trigger for TMD and orofacial pain.

Updating the physiology of craniofacial growth: an immersion course

The Update Course in Craniofacial Growth Physiology will be held on the 9th, 10th, 11th and 12th of March. Come to deepen this theme based on the scientific knowledge of Prof. Patrícia Valério. The objective of the course is to understand the biological process involved on craniofacial growth, as well as the possible interventions that can be done to solve the impairments that happen during this period and to adopt the correct posture and therapeutic approach.



International Course on Orofacial Motricity and Malocclusion

Registration for the International Course on Orofacial Motricity and Malocclusion for Dentists is now open. After the success of the first edition, the Lisbon School prepared another multidisciplinary course of one module. Mark the 16th and 17th of March on your calendar. The connection between Speech Therapy and Dental Medicine is essential to the development of a dynamic and interactive approach, identifying and avoiding complications or relapses in the treatment of malocclusion, thus promoting therapeutic success.

How are our treatments at the **Lisbon Clinic**



CLINICAL CASE
21 YEARS OLD, FEMALE PATIENT



DIAGNOSTIC

Female patient with 21 years, with a unilateral functional right crossbite with inferior midline deviation and a severe facial asymmetry. Her preferred mastication side was the right side.

TREATMENT

She was treated with a SN11 appliance for 9 months followed by a Planas Compound appliance for 15 months. She was advised to chew on the left side for muscular equilibration.

CLINICAL RESULTS

We treated the crossbite, corrected the inferior midline deviation and promoted a bilateral mastication. We also obtained muscular reequilibration.

Follow Us

About Clinic

Lisbon Research Center

The Lisbon Research Center in Functional Jaw Orthopedics advice you to know better the work of Dr. Melvin Moss through his articles about - The functional matrix.

[View full article](#)

